



Greater Bemidji Area Joint Planning Board

June 2018

City of Bemidji

Northern Township

317 4th Street NW
Bemidji, MN 56601

(218) 759-3579



What's going on?

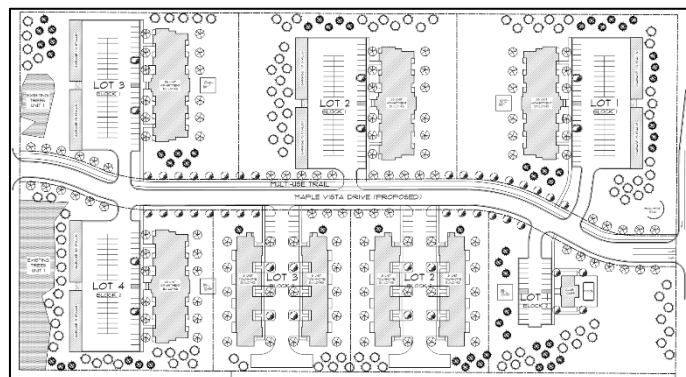
Northern Rides –Variance

Northern Township – V-18-31.02727.00 – Shaw Holdings LLC, known as Northern Rides is requesting approval of a variance in order to expanding a commercial structure within the structure setback of the existing septic system located at 516 Centerpoint Ct NW within the B-1 Low Density Commercial Zoning District of Northern Township.

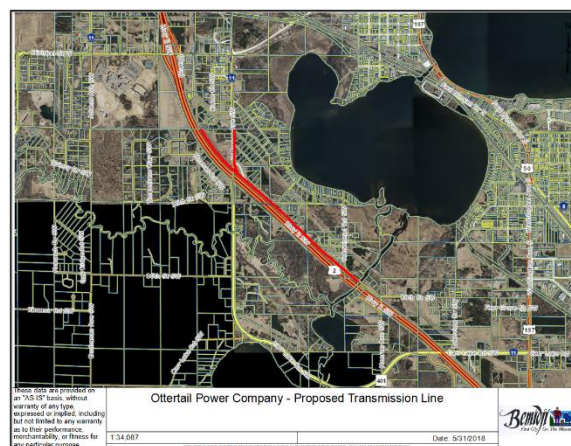


Kuepers (Maplewood Apartments) – Final Planned Unit Development (PUD) and Conditional Use Permit

City of Bemidji – PUD/CUP-18-80.00182.01- Kuepers Inc. / Beltrami County HRA are requesting final approval for a planned unit development (PUD) through a conditional use permit (CUP) located on parcel 80.00182.01 with the (R-6) Multi-Family Zoning District in the City of Bemidji. The removal of more than 60% of the high quality significant trees is also being requested through the CUP process.



City of Bemidji – CUP-18-OtterTail - Otter Tail Power is requesting an approval amendment of a Conditional Use Permit from the Joint Planning Board to alter the site location of the approved upgraded 69 kilovolt (kV) line to a 115 kV line within the Greater Bemidji Area.



Northern Township: IUP-18-31.00197.03 – The Bemidji Fire Department is requesting an Interim Use Permit for an unstaffed fire station with two pieces of fire equipment. The proposed address is 881 Winter Sumac Road NE in the (B-1) Low Density Commercial Zoning District of Northern Township.



Development Projects

- **City Liquor Store (located on Paul Bunyan Dr NW)**
 - Plans approved; Construction started
- **Hoover Properties, LLC – Mini Storage Facility (located on Irvine Ave NW)**
 - On-going construction (landscaping)
- **Magnum Trucking (located on Corrigan Ave SE)**
 - On-going construction (landscaping & surfacing)
- **Beltrami County Transfer Station (located on Industrial Park Dr SE)**
 - On-going construction (building & surfacing)
- **Autumn Hills Assisted Living (located on Park Ave NW)**
 - On-going construction (screening & landscaping)
- **Sanford Medical Health Cancer Center (located on 34th St NW)**
 - On-going construction (building)
- **Great Western Properties (located on Hamilton Park NW)**
 - On-going construction (building)
- **Cedar Point Multi Family (located on Northern Cedar Ave NW)**
 - On-going construction (building & surfacing)
- **South Beach Apartments (located on Lake Shore Dr SE)**
 - On-going construction (building)
- **Cooper Dental (located on 30th Street NW)**
 - Approved plans administratively; construction started
- **Stoney Ridge Apartments (located on Norton Ave NW)**
 - Approved plans administratively; construction started
- **Northern Access Dental (located on Anne Street)**
 - Approved plans administratively; construction started

Planning Report

Comprehensive Plan

JPB staff has recently held a couple meetings with the Steering Committee to review and discuss the Comprehensive Plan draft. JPB staff is in the process of setting up a third meeting with the Steering Committee to complete the review of the draft. A public meeting is anticipated for July to allow the public the opportunity to review and comment on the document. Based on this timeline of events, the adoption of the Comprehensive Plan should take place in August. Information regarding the public meeting and the draft review will be shared in the coming weeks on the GBAJPB website.

LGU Meeting

The spring/summer Joint Planning LGU meeting is scheduled for Tuesday, June 12th at Diamond Point Park in the Diamond Pavilion, starting at 6:00 p.m. The plan is to discuss what is going on around the Greater Bemidji Area along with the future plans of the GBAJPB. Also, at this meeting we will discuss and brainstorm ideas for potential septic services in the area, specifically on the north end of Lake Bemidji.



June 2018						
Sunday	Monday	Tuesday	Wednesday	Thursday	Friday	Saturday
					1	2
3	4	5	6	7	8	9
10	11	12 LGU JPB	13	14	15	16
17	18	19	20	21	22	23
24	25	26	27	28 JPC	29	30

July 2018						
Sunday	Monday	Tuesday	Wednesday	Thursday	Friday	Saturday
1	2	3	4	5	6	7
8	9	10	11 JPB	12	13	14
15	16	17	18	19	20	21
22	23	24	25	26 JPC	27	28
29	30	31				

August 2018						
Sunday	Monday	Tuesday	Wednesday	Thursday	Friday	Saturday
			1	2	3	4
5	6	7	8 JPB	9	10	11
12	13	14	15	16	17	18
19	20	21	22	23 JPC	24	25
26	27	28	29	30	31	

Upcoming JPB/JPC Meetings

- LGU – June 12th
- JPB – June 13th
- JPC – June 28th
- JPB – July 11th
- JPC – July 26th
- JPB – August 8th
- JPC – August 23rd
- JPB – September 12th