

Photo Courtesy of the MPR News



Greater Bemidji Area Joint Planning Board

February 2017

Bemidji Township

City of Bemidji

Northern Township

PO Box 1100
Bemidji, MN 56619

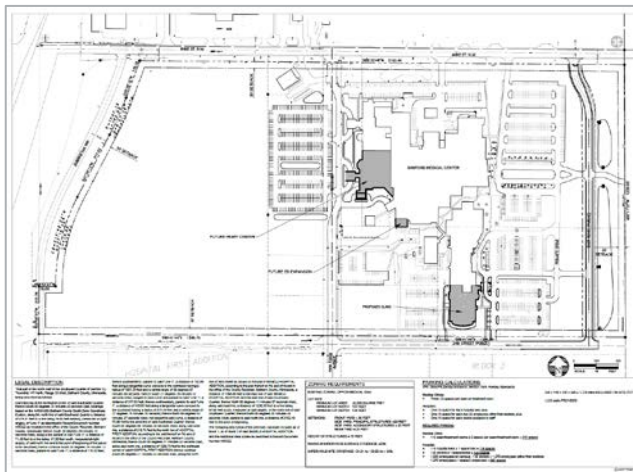
(218) 759-3579



What's going on?

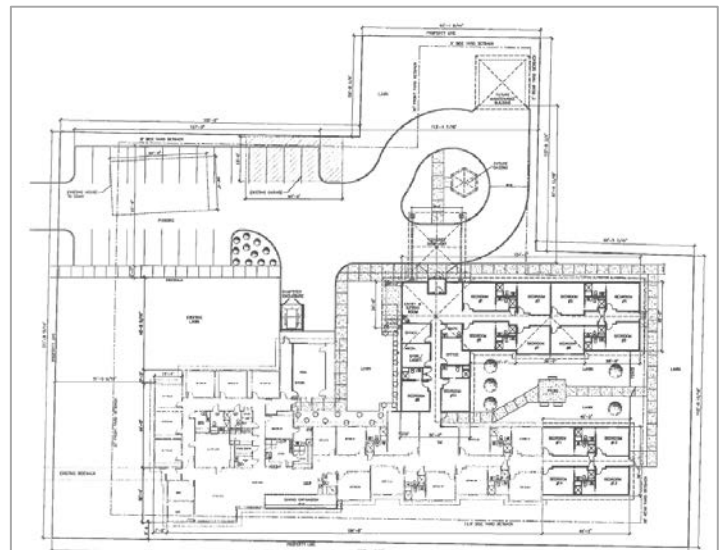
Planning Cases for February/March

City of Bemidji: PUD-17-80.05081.00 – Sanford Medical is requesting CONCEPT approval of a Planned Unit Development for their medical campus located at 1300 Anne Street. This primary parcel is 80.05081.00. Additional parcels as part of the application include: 80.00469.00, 80.00470.01, 80.04727.00, 80.04728.00, 80.04729.00, 80.04730.00, 80.04731.00, 80.04732.00, 80.04733.00, 80.04734.00, 80.04735.00, 80.04735.01, 80.04736.00, 80.04737.00, 80.04738.00.



Planning Cases for February/March

City of Bemidji: CUP-17-80.03320.00, 80.03149.00 & 80.03143.00 – Shelly and Dale Cloose of Autumn Hills Assisted Living are requesting approval for expansion of a Senior Living Facility located at 2528 Park Ave NW in R-5 High Density Residential.



Planning Cases for February/March

City of Bemidji – IUP/-17-80.03751.00: Modular Solutions, Ltd. is requesting an Interim Use Permit (IUP) for the temporary use of building material storage with the assembling of pre-manufactured walls in a (B-2) – General Commercial District. The parcel is located at 601 Paul Bunyan DR SE in Bemidji.



City of Bemidji: IUP-17-80.00757.00– Williams Tysver is requesting approval of a Vacation Rental Home located at 2926 Birchmont Dr NE in R-4 *Moderate Density Residential and Shoreland*.



Northern Township: IUP-17-31.001392.00 & 31.00829.00– Rocklin Inc. is requesting an Interim Use Permit to operate a Vacation Rental Home located at 3915 Waville Rd NE in R-3 *Suburban Residential and Shoreland Overlay District*.



Planning Report

Comprehensive Plan

Staff continues to make great strides in completing the Comprehensive Plan. On January 24th, the objectives and strategies for the remaining chapters were finalized. All final objectives and strategies were incorporated into a Community Action Plan and was recently distributed to the Steering Committee, the Joint Planning Commission and the Joint Planning Board for review and comments. The next work session is scheduled for February 7th to begin completion of the Community Action Plan. If you would to provide feedback towards the Community Action Plan, visit the following site:

https://drive.google.com/drive/folders/oB_WTx10904noQjVaajVoYUhoWTO?usp=sharing



Development Projects

- Primus Dental Clinic
- Tesoro Gas Station
- CrossFit Bemidji
- Med Express (Old Bowling Alley)
- Cenex Gas Station/Car Wash/A&W
- Red Barn Estates
- Great Western Properties
- Cedar Pointe Multi Family
- Center City Housing Multi Family
- Toyota
- South Beach Apartments – Pace Project

Planning Report

Community Planning Assistance for Wildfire (CPAW)

On January 31st and February 1st, CPAW Representatives were in Bemidji for a site tour and a kick-off stakeholder meeting. Day 1 consisted of a quick kick-off meeting with the CPAW Representatives followed by a five-hour site tour of the Greater Bemidji Area. A bus was arranged for the tour to allow all participating parties to communicate throughout the tour. Day 2 consisted of the kick-off stakeholder meeting compiled of key individuals/groups who will be part of the ongoing engagement of the CPAW program. Lakeland News attended the meeting as well and ran a great segment, so take a look.

<https://lptv.org/planning-for-wildfires-through-cpaw/>

Just a refresher, the City of Bemidji and the Greater Bemidji Area recently was selected as one of five new communities from across the country to receive technical assistance under a national program that helps reduce future wildfire risk and costs.

As cities and counties across the country are experiencing the devastating impacts from wildfire, the CPAW program offers much-needed support at the local level. Through CPAW, City of Bemidji and the Greater Bemidji Area will collaborate with a team of consultants, including land use planners, foresters, and risk mapping experts, to develop wildfire planning and regulatory strategies.

CPAW is a partnership between Wildfire Planning International and Headwaters Economics, two organizations dedicated to working with communities to develop and implement local planning measures to reduce wildfire risk.

CPAW plans to return to Bemidji the week of May 15th and at that time they requested a meeting with all elected officials from the JPC and the JPB as well as the rest of the elected officials from the City, the Townships and the County. So please mark your calendars and plan on attending. Thanks!

New to the Office

A new revised JPB website has been launched. Staff have been working to make the website more user-friendly that will allow the public to send comments whether it's for planning cases or the comprehensive plan. The website is by no means complete as we will continue to make edits to make it the best possible site for the public to find what they are looking for. Not only is the website a significant improvement but it is saving the JPB money. Checkout the new website and let us know what improvements we can do to make it better.

www.jpbgba.org

Upcoming JPB/JPC Meetings

- JPB – February 8th
- JPC – February 23rd
- JPB – March 8th
- JPC – March 23rd
- JPB – April 12th
- JPC – April 27th
- JPB – May 10th
- JPC – May 25th
- JPB – June 14th